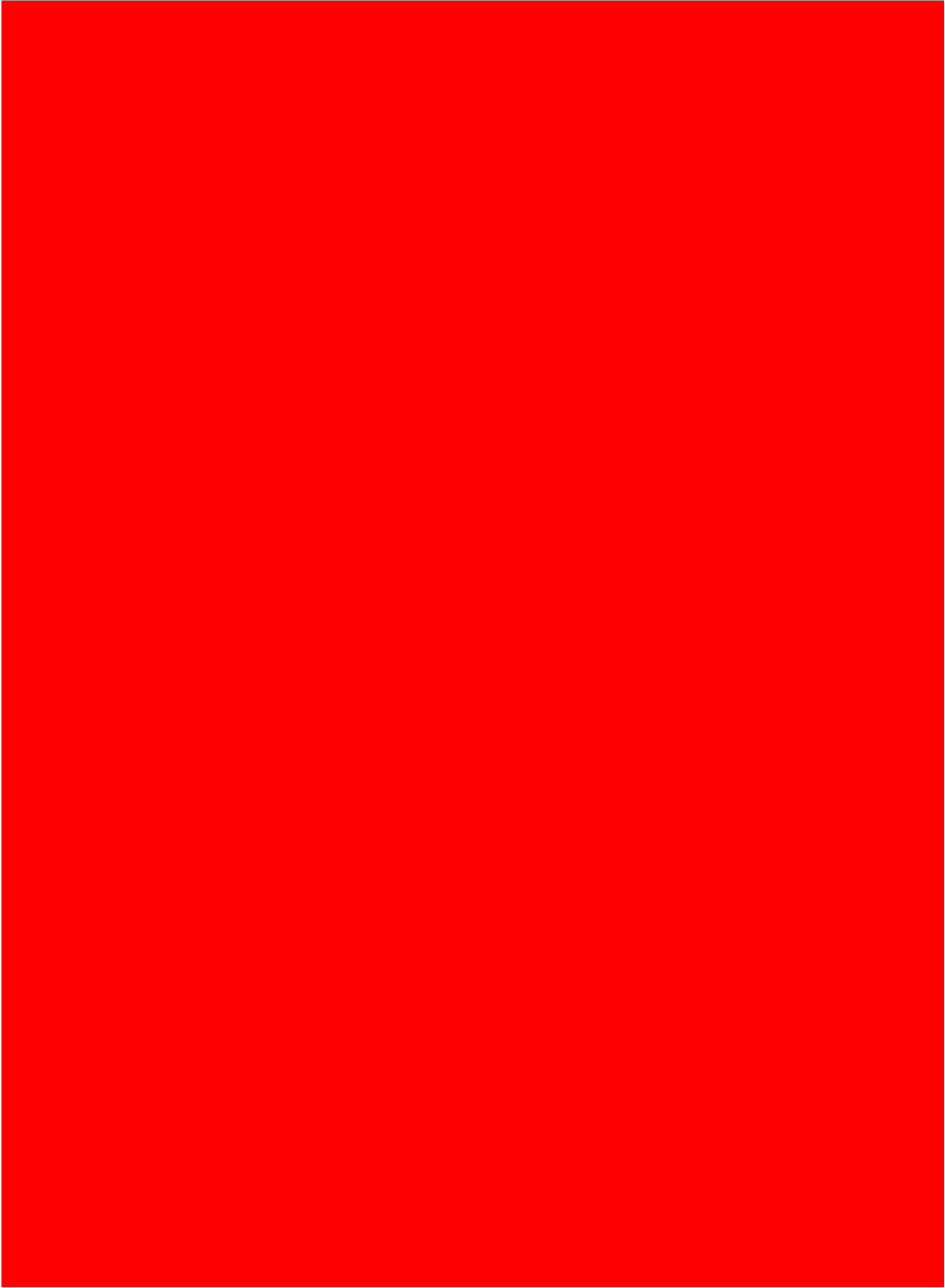


Lineto Type Foundry  
Technical Documentation  
Circular Pro Book



[illegible]

Font Family — Circular Pro  
 Style — Book  
 Font Format — OpenType PostScript (OpenType CFF)  
 Designer — Laurenz Brunner (2013)

## Encoded Characters

All encoded characters should be accessible with every unicode capable application.  
 For details about Unicode Blocks visit the [Unicode Website](https://unicode.org/).

## Basic Latin

Block from 0000 to 007F

0000	000D	0020	0021	0022	0023	0024	0025	0026	0027	0028	0029	002A	002B	002C	002D	002E	002F	0030	0031	0032	0033	0034	0035
			!	"	#	\$	%	&	'	(	)	*	+	,	-	.	/	0	1	2	3	4	5
0036	0037	0038	0039	003A	003B	003C	003D	003E	003F	0040	0041	0042	0043	0044	0045	0046	0047	0048	0049	004A	004B	004C	004D
6	7	8	9	:	;	<	=	>	?	@	A	B	C	D	E	F	G	H	I	J	K	L	M
004E	004F	0050	0051	0052	0053	0054	0055	0056	0057	0058	0059	005A	005B	005C	005D	005E	005F	0060	0061	0062	0063	0064	0065
N	O	P	Q	R	S	T	U	V	W	X	Y	Z	[	\	]	^	_	`	a	b	c	d	e
0066	0067	0068	0069	006A	006B	006C	006D	006E	006F	0070	0071	0072	0073	0074	0075	0076	0077	0078	0079	007A	007B	007C	007D
f	g	h	i	j	k	l	m	n	o	p	q	r	s	t	u	v	w	x	y	z	{		}
007E																							
~																							

## Latin-1 Supplement

Block from 0080 to 00FF

00A0	00A1	00A2	00A3	00A4	00A5	00A6	00A7	00A8	00A9	00AA	00AB	00AC	00AD	00AE	00AF	00B0	00B1	00B2	00B3	00B4	00B5	00B6	00B7
	ı	¢	£	¤	¥	¦	§	¨	©	ª	«	¬	-	®	¯	°	±	²	³	´	µ	¶	·
00B8	00B9	00BA	00BB	00BC	00BD	00BE	00BF	00C0	00C1	00C2	00C3	00C4	00C5	00C6	00C7	00C8	00C9	00CA	00CB	00CC	00CD	00CE	00CF
,	¹	º	»	¼	½	¾	¿	À	Á	Â	Ã	Ä	Å	Æ	Ç	È	É	Ê	Ë	Ì	Í	Î	Ï
00D0	00D1	00D2	00D3	00D4	00D5	00D6	00D7	00D8	00D9	00DA	00DB	00DC	00DD	00DE	00DF	00E0	00E1	00E2	00E3	00E4	00E5	00E6	00E7
Ð	Ñ	Ò	Ó	Ô	Õ	Ö	×	Ø	Ù	Ú	Û	Ü	Ý	Þ	ß	à	á	â	ã	ä	å	æ	ç
00E8	00E9	00EA	00EB	00EC	00ED	00EE	00EF	00F0	00F1	00F2	00F3	00F4	00F5	00F6	00F7	00F8	00F9	00FA	00FB	00FC	00FD	00FE	00FF
è	é	ê	ë	ì	í	î	ï	ð	ñ	ò	ó	ô	õ	ö	÷	ø	ù	ú	û	ü	ý	þ	ÿ

## Latin Extended-A

Block from 0100 to 017F

0100	0101	0102	0103	0104	0105	0106	0107	0108	0109	010A	010B	010C	010D	010E	010F	0110	0111	0112	0113	0114	0115	0116	0117
Ā	ā	Ă	ă	Ą	ą	Ć	ć	Ĉ	ĉ	Ċ	ċ	Č	č	Ď	ď	Đ	đ	Ē	ē	Ĕ	ĕ	Ė	ė
0118	0119	011A	011B	011C	011D	011E	011F	0120	0121	0122	0123	0124	0125	0126	0127	0128	0129	012A	012B	012C	012D	012E	012F
Ę	ę	Ě	ě	Ĝ	ĝ	Ğ	ğ	Ġ	ġ	Ĥ	ĥ	Ħ	ħ	Ĩ	ĩ	Ĳ	ĳ	Ĵ	ĵ	Ķ	ķ	Ļ	ļ
0130	0131	0132	0133	0134	0135	0136	0137	0138	0139	013A	013B	013C	013D	013E	013F	0140	0141	0142	0143	0144	0145	0146	0147
Į	į	U	ij	Ĵ	ĵ	ķ	ķ	κ	Ł	ł	Ł	ł	Ł	ł	Ł	ł	Ł	ł	Ł	ł	Ł	ł	Ł

Font Family — Circular Pro  
 Style — Book  
 Font Format — OpenType PostScript (OpenType CFF)  
 Designer — Laurenz Brunner (2013)

0148	0149	014A	014B	014C	014D	014E	014F	0150	0151	0152	0153	0154	0155	0156	0157	0158	0159	015A	015B	015C	015D	015E	015F
ň	ħ	Ŋ	ŋ	Ō	ō	Ŏ	ö	Œ	œ	Ř	ř	Ŗ	ŗ	Ř	ř	Ś	ś	Ŝ	ŝ	Ş	ş		
0160	0161	0162	0163	0164	0165	0166	0167	0168	0169	016A	016B	016C	016D	016E	016F	0170	0171	0172	0173	0174	0175	0176	0177
Š	š	Ţ	ţ	Ť	ť	Ŧ	ŧ	Ũ	ũ	Ū	ū	Ů	ů	Ű	ű	Ų	ų	Ŵ	ŵ	Ŷ	ŷ		
0178	0179	017A	017B	017C	017D	017E																	
Ỳ	Ỵ	Ỷ	Ỹ	Ỻ	ỻ	ỽ																	

## Latin Extended-B

Block from 0180 to 024F

018F	0192	01B5	01B6	01FA	01FB	01FC	01FD	01FE	01FF	0218	0219	021A	021B	0237
Θ	ƒ	Ʒ	Ʒ	Ǻ	ǻ	Æ	æ	Ø	ø	Ş	ş	Ţ	ţ	Ј

## IPA Extensions

Block from 0250 to 02AF

0259
ə

## Spacing Modifier Letters

Block from 02B0 to 02FF

02C6	02C7	02C9	02D8	02D9	02DA	02DB	02DC	02DD
ˆ	˘	ˉ	˙	˚	˛	˜	˝	˞

## Greek and Coptic

Block from 0370 to 03FF

0394	03A9	03BC	03C0
Δ	Ω	μ	π

## Latin Extended Additional

Block from 1E00 to 1EFF

1E80	1E81	1E82	1E83	1E84	1E85	1E8A	1E8B	1EF2	1EF3
Ẁ	ẁ	Ẃ	ẃ	Ẅ	ẅ	Ẋ	ẋ	Ỳ	ỳ

Font Family — Circular Pro  
 Style — Book  
 Font Format — OpenType PostScript (OpenType CFF)  
 Designer — Laurenz Brunner (2013)

## General Punctuation

Block from 2000 to 206F

2007	2008	200B	2013	2014	2018	2019	201A	201C	201D	201E	2020	2021	2022	2026	2030	2039	203A	2042	2044	2051
			—	—	‘	’	,	“	”	„	†	‡	●	...	‰	<	>	**	/	*

## Superscripts and Subscripts

Block from 2070 to 209F

2070	2074	2075	2076	2077	2078	2079	2080	2081	2082	2083	2084	2085	2086	2087	2088	2089
0	4	5	6	7	8	9	0	1	2	3	4	5	6	7	8	9

## Currency Symbols

Block from 20A0 to 20CF

20AC
€

## Letterlike Symbols

Block from 2100 to 214F

2113	2122	2126
ℓ	™	Ω

## Number Forms

Block from 2150 to 218F

2160	2161	2162	2163	2164	2165	2166	2167	2168	2169	216C	216D	216E	216F
I	II	III	IV	V	VI	VII	VIII	IX	X	L	C	D	M

## Arrows

Block from 2190 to 21FF

2190	2191	2192	2193	2196	2197	2198	2199	21A9	21B0	21B1	21B2	21B3	21B4	21C6
←	↑	→	↓	↖	↗	↘	↙	↻	↺	↻	↻	↻	↻	↻

## Mathematical Operators

Block from 2200 to 22FF

2202	2206	220F	2211	2212	2215	2219	221A	221E	222B	2248	2260	2264	2265	22C5
∂	Δ	Π	Σ	−	/	·	√	∞	∫	≈	≠	≤	≥	·

Font Family — Circular Pro  
 Style — Book  
 Font Format — OpenType PostScript (OpenType CFF)  
 Designer — Laurenz Brunner (2013)

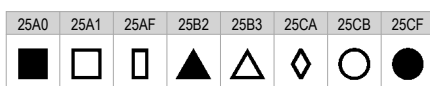
## Enclosed Alphanumerics

Block from 2460 to 24FF



## Geometric Shapes

Block from 25A0 to 25FF



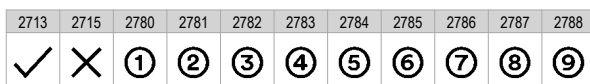
## Miscellaneous Symbols

Block from 2600 to 26FF



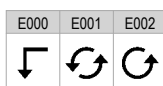
## Dingbats

Block from 2700 to 27BF



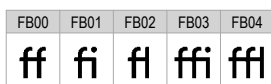
## Private Use Area

Block from E000 to F8FF



## Alphabetic Presentation Forms

Block from FB00 to FB4F



## Arabic Presentation Forms-B

Block from FE70 to FEFF



Font Family — Circular Pro  
 Style — Book  
 Font Format — OpenType PostScript (OpenType CFF)  
 Designer — Laurenz Brunner (2013)

## Unencoded Glyphs

All unencoded glyphs are accessible with OpenType layout feature capable applications.  
 For a complete list of supported OpenType layout features see the next section.

## Case-Sensitive Forms

-	-	-	-	-	-	-	-	-	-	-	-	-	-	-	-
(	)	-	[	]	{	}	i	«	-	»	¿	—	—	<	>

## Denominators, Fractions

-	-	-	-	-	-	-	-	-	-
0	1	2	3	4	5	6	7	8	9

## Fractions

-

## Fractions, Numerators

-	-	-	-	-	-	-	-	-	-
0	1	2	3	4	5	6	7	8	9

## Standard Ligatures

-	-	-	-	-
ff	ffi	ffl	fi	fl

## Localized Forms

-	-	-
i	L	l

## Ordinals

-	-	-	-	-	-	-	-	-	-	-	-	-	-	-	-	-	-	-	-	-	-	-	-
a	b	c	d	e	f	g	h	i	j	k	l	m	n	o	p	q	r	s	t	u	v	w	x
-	-																						
y	z																						

Font Family — Circular Pro  
 Style — Book  
 Font Format — OpenType PostScript (OpenType CFF)  
 Designer — Laurenz Brunner (2013)

## Stylistic Alternates, Stylistic Set 1

-	-	-	-	-
G	Ĝ	Ğ	Ġ	Ḡ

## Stylistic Set 2

-	-	-	-	-	-	-	-	-	-	-
a	à	á	â	ã	ä	å	ā	ă	q	ǎ

## Stylistic Set 3

-	-	-	-
r	ŕ	ŗ	ř

## Stylistic Set 4

-
&

## Stylistic Set 5

-
1

## Stylistic Set 6

-
®

## Tabular Figures

-	-	-	-	-	-	-	-	-	-	-	-	-	-	-	-	-	-	-	-	-	-	-	-
	#	\$	%	+	,	.	0	1	2	3	4	5	6	7	8	9	:	;	<	=	>	¢	£
-	-	-	-	-	-	-	-	-	-	-	-	-	-	-	-	-	-	-	-	-	-	-	-
¤	¥	§	¬	±	×	÷	f			%	€	–	≈	≠	≤	≥							

## Other

-	-	-	-	-	-	-	-	-	-	-	-	-	-	-	-	-	-
□	’	‚	‘	„	”	˘	˙	–	ˊ	ˆ	˜	˚	˛	˜	˝	˝	,



## OpenType Layout Features

For details about OpenType Layout Features see the [OpenType Layout tag registry](#).

### Substitution Features



#### Access All Alternates

This feature makes all variations of a selected character accessible.



#### Contextual Alternates

In specified situations, replaces default glyphs with alternate forms which provide better joining behavior.



#### Standard Ligatures

Replaces a sequence of glyphs with a single glyph which is preferred for typographic purposes. This feature covers the ligatures which the designer/manufacturer judges should be used in normal conditions.



#### Tabular Figures

Replaces figure glyphs set on proportional widths with corresponding glyphs set on uniform (tabular) widths.



#### Numerators

Replaces selected figures which precede a slash with numerator figures, and replaces the typographic slash with the fraction slash.



#### Denominators

Replaces selected figures which follow a slash with denominator figures.



#### Fractions

Replaces figures separated by a slash with 'common' (diagonal) fractions.



#### Superscript

Replaces lining or oldstyle figures with superior figures (primarily for footnote indication), and may replace lowercase letters with superior letters (primarily for abbreviated French titles).



#### Subscript

The "subs" feature may replace a default glyph with a subscript glyph.



#### Scientific Inferiors

Replaces lining or oldstyle figures with inferior figures (smaller glyphs which sit lower than the standard baseline, primarily for chemical or mathematical notation). May also replace lowercase characters with alphabetic inferiors.



#### Ordinals

Replaces default alphabetic glyphs with the corresponding ordinal forms for use after figures.

Font Family — Circular Pro  
 Style — Book  
 Font Format — OpenType PostScript (OpenType CFF)  
 Designer — Laurenz Brunner (2013)



#### Case-Sensitive Forms

Shifts various punctuation marks up to a position that works better with all-capital sequences or sets of lining figures; also changes oldstyle figures to lining figures.



#### Localized Forms

This feature enables localized forms of glyphs to be substituted for default forms.



#### Stylistic Alternates

Many fonts contain alternate glyph designs for a purely esthetic effect; these don't always fit into a clear category like swash or historical. This feature replaces the default forms with the stylistic alternates.



#### Stylistic Set 1

Glyphs in stylistic sets may be designed to harmonise visually, interact in particular ways, or otherwise work together.



#### Stylistic Set 2



#### Stylistic Set 3



#### Stylistic Set 4



#### Stylistic Set 5



#### Stylistic Set 6



#### Stylistic Set 7



#### Alternate Annotation Forms

Replaces default glyphs with various notational forms (e.g. glyphs placed in open or solid circles, squares, parentheses, diamonds or rounded boxes).

## Positioning Features



#### Capital Spacing

Globally adjusts inter-glyph spacing for all-capital text. Most typefaces contain capitals and lowercase characters, and the capitals are positioned to work with the lowercase. When capitals are used for words, they need more space between them for legibility and esthetics.



#### Kerning

Adjusts amount of space between glyphs, generally to provide optically consistent spacing between glyphs.

Font Family — Circular Pro  
Style — Book  
Font Format — OpenType PostScript (OpenType CFF)  
Designer — Laurenz Brunner (2013)

---

## Codepages

### MacOS

MacOS Central Europe  
MacOS Croatian  
MacOS Icelandic  
MacOS Roman

MacOS Romanian  
MacOS Turkish  
MacOS Welsh

### MS Windows

MS Windows 1250 Central European  
MS Windows 1252 Western (ANSI)

MS Windows 1254 Turkish  
MS Windows 1257 Baltic

### ISO

ISO 8859- 1 Latin 1 (Western)  
ISO 8859- 2 Latin 2 (Central Europe)  
ISO 8859- 3 Latin 3 (Tu, Malt, Gal, Esp)  
ISO 8859- 4 Latin 4 (Baltic)

ISO 8859- 9 Latin 5 (Turkish)  
ISO 8859-13 Latin 7 (Baltic 2)  
ISO 8859-15 Latin 9  
ISO 8859-16 Latin 10

### IBM

IBM 37 United States - EBCDIC (IBM-28709)  
IBM 273 Germany - EBCDIC  
IBM 277 Denmark, Norway - EBCDIC  
IBM 278 Finland, Sweden - EBCDIC  
IBM 280 Italy - EBCDIC  
IBM 284 Spain, Latin America - EBCDIC  
IBM 285 United Kingdom - EBCDIC

IBM 297 France - EBCDIC  
IBM 500 International - EBCDIC  
IBM 871 Iceland - EBCDIC  
IBM 921 Baltic  
IBM 1047 Open Systems - EBCDIC  
IBM 1112 Baltic - EBCDIC

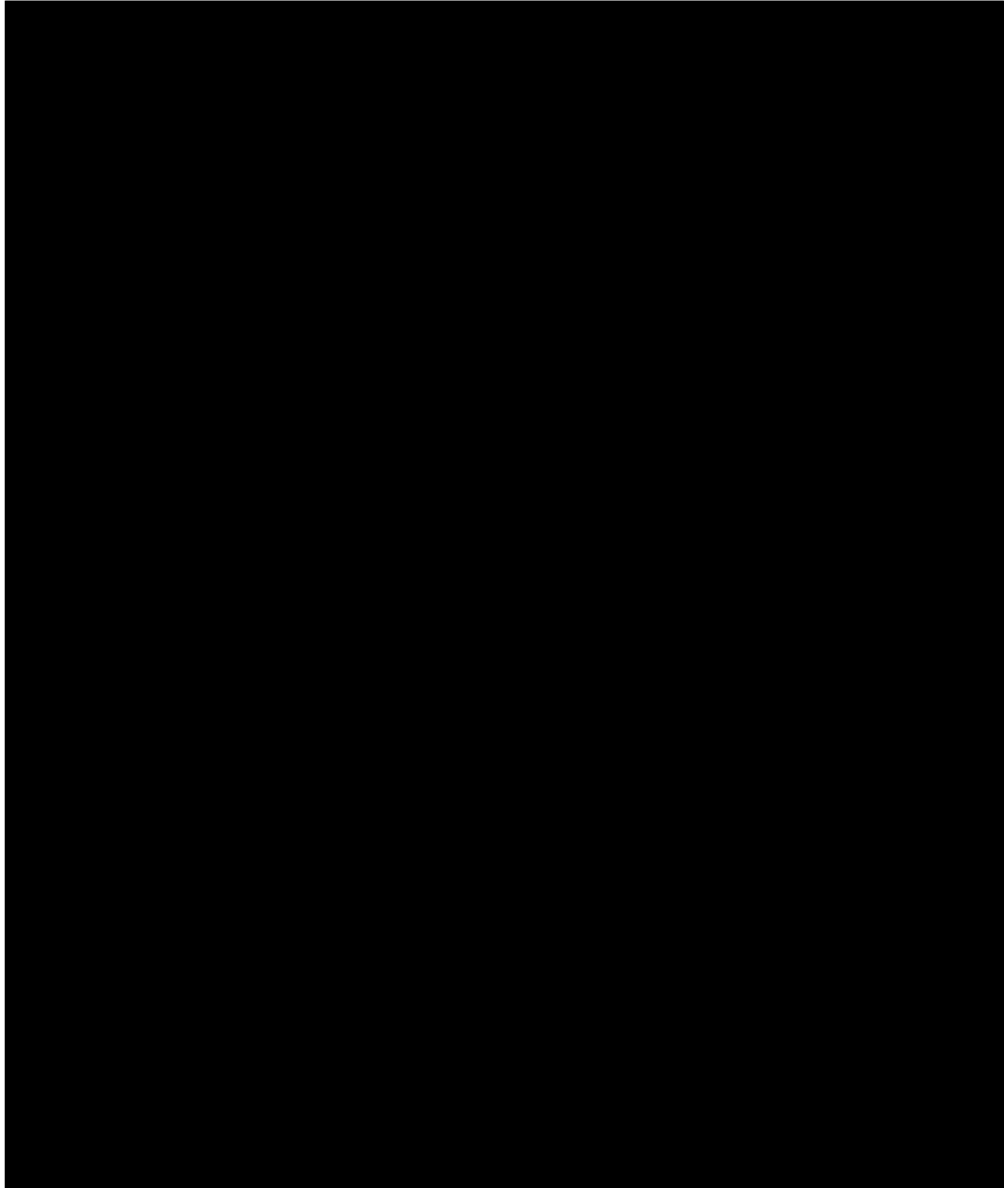
Font Family — Circular Pro  
 Style — Book  
 Font Format — OpenType PostScript (OpenType CFF)  
 Designer — Laurenz Brunner (2013)

## Languages

Information about languages is mainly based on the Unicode Common Locale Data Repository. For details visit the [Unicode CLDR Project](#).

Afar	Ga	Malagasy	Shambala
Afrikaans	Galician	Malay	Shona
Albanian	Ganda	Maltese	Sidamo
Asu	German	Manx	Slovak
Azerbaijani	German, Low	Maori	Slovenian
Basque	German, Swiss	Meru	Soga
Bemba	Gusii	Moldavian	Somali
Bena	Hungarian	Morisyen	Sorbian, Lower
Bosnian	Icelandic	Ndebele, North	Sorbian, Upper
Breton	Indonesian	Ndebele, South	Sotho, Northern
Catalan	Interlingua	Norwegian Bokmål	Sotho, Southern
Chiga	Irish	Norwegian Nynorsk	Spanish
Cornish	Italian	Nyanja	Swahili
Crimean Tatar	Jju	Nyankole	Swati
Croatian	Kabuverdianu	Occitan	Swedish
Czech	Kalaallisut	Oromo	Taita
Danish	Kalenjin	Polish	Taroko
Dutch	Kamba	Portuguese	Teso
Embu	Kikuyu	Romanian	Tsonga
English	Kinyarwanda	Romansh	Tswana
Esperanto	Koro	Rombo	Turkish
Estonian	Kurdish	Rwa	Tyap
Faroese	Latvian	Saho	Vunjo
Filipino	Lithuanian	Samburu	Welsh
Finnish	Luo	Sami Northern	Wolof
French	Luyia	Sango	Xhosa
Frisian West	Machame	Sena	Zulu
Friulian	Makonde	Serbian	

Lineto GmbH  
Lutherstrasse 32  
CH-8004 Zürich / Switzerland  
General inquiries — [service@lineto.com](mailto:service@lineto.com)  
Technical inquiries — [support@lineto.com](mailto:support@lineto.com)  
Sales & licensing inquiries — [sales@lineto.com](mailto:sales@lineto.com)



No part of this publication may be reproduced, stored in a retrieval system, or transmitted, in any form or by any means, electronic, mechanical, photocopying, recording or otherwise, without the prior written consent of the publisher.  
This publication and the information herein is furnished AS IS, is subject to change without notice, and should not be construed as a commitment by Lineto Type Foundry. Lineto Type Foundry assumes no responsibility for any errors or inaccuracies, makes no warranty of any kind (express, implied or statutory) with respect to this publication, and expressly disclaims any and all warranties of merchantability, fitness for particular purposes and noninfringement of third party rights.  
Brand or product names, used in this publication, are the trademarks or registered trademarks of their respective holders.  
Document generated 2017/04/24-12:22:03 with e-font PDF Generator